



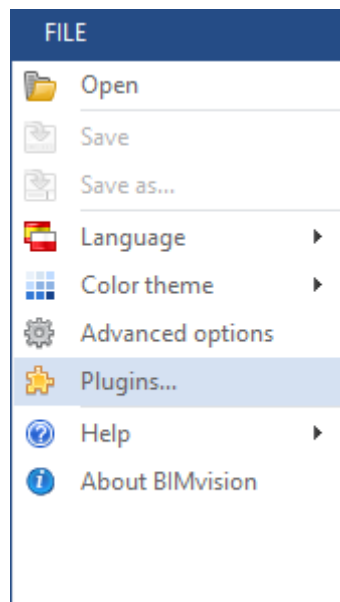
# BIMvision®

## INSTRUCTION FOR PLUGIN USERS

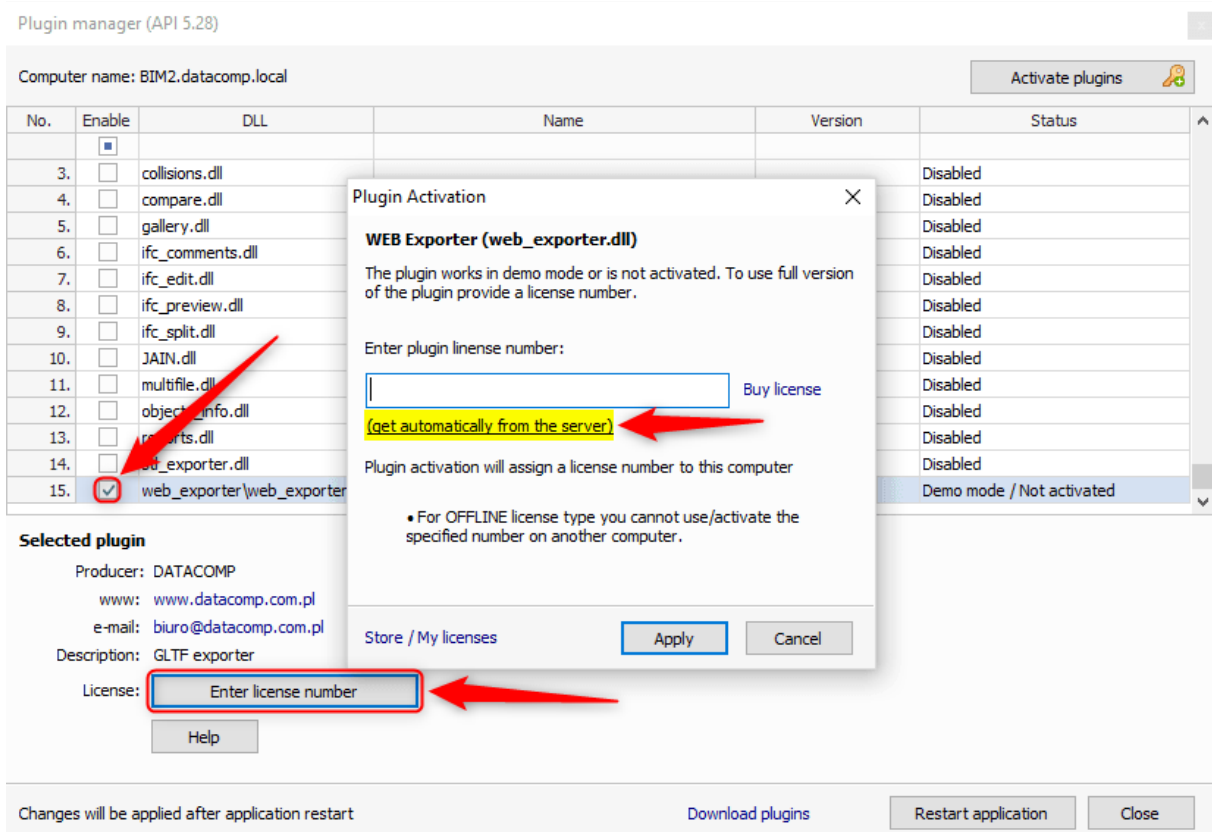
*How to activate a plugin? Step by step instruction*

### 1/ Single plugin activation

A. In the BIMvision menu go to FILE => PLUGINS

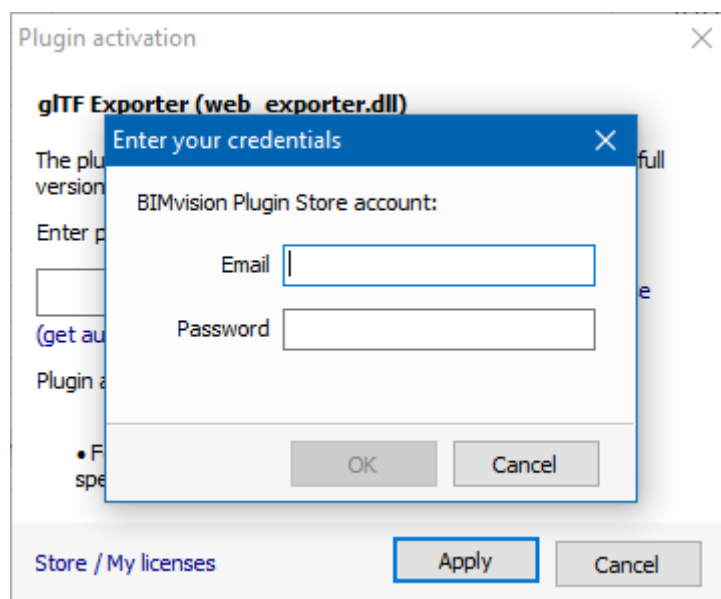


B. In the **Plugin manager** window check the plugin you want to activate and click *Enter license number*. A *Plugin activation* window will appear

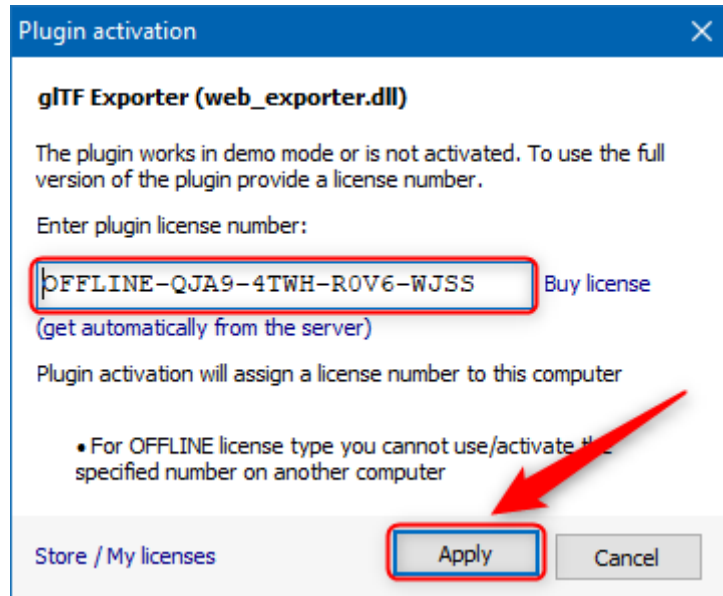


**NOTE!** If the plugin is not listed in the Plugin Manager window, please download its DEMO version from store.bimvision.eu.

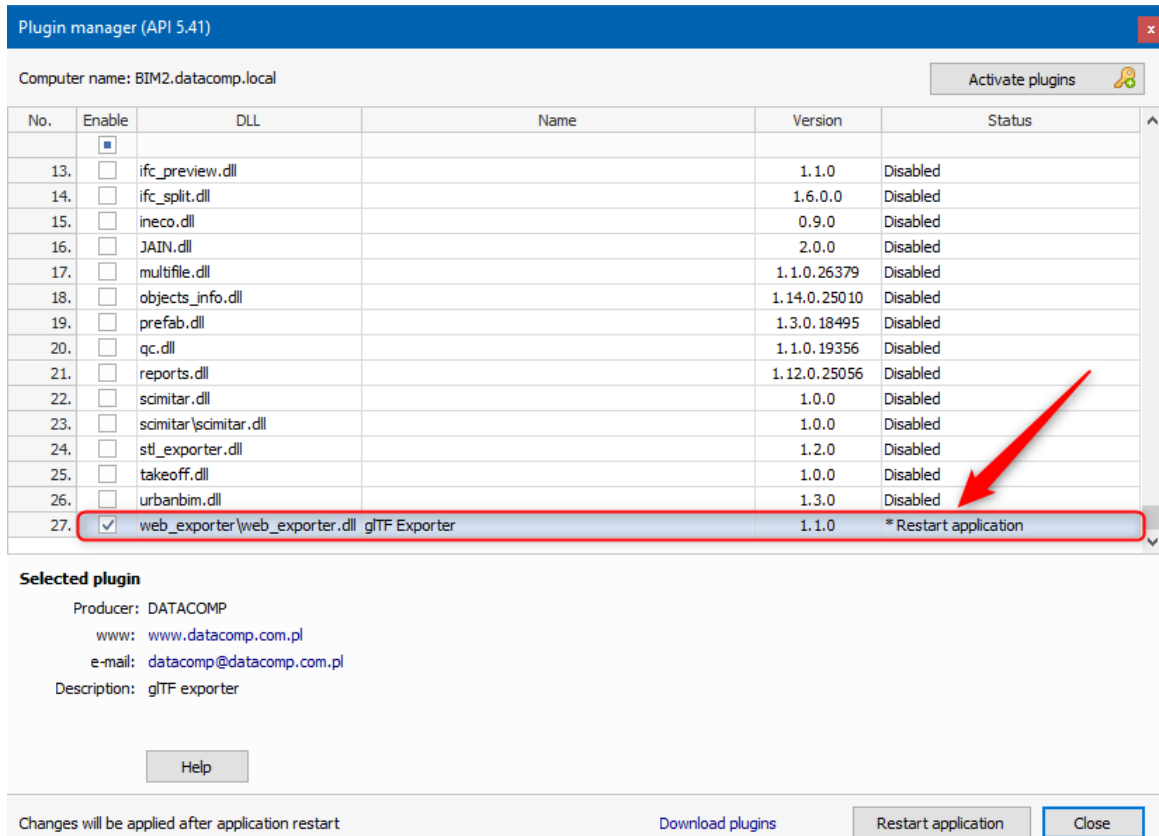
C. Enter the plugin license number in the appropriate field. You can copy it manually from your store.bimvision.eu account or use the '*get automatically from the server*' option by clicking on the link under the license number field. You will then be asked to log in



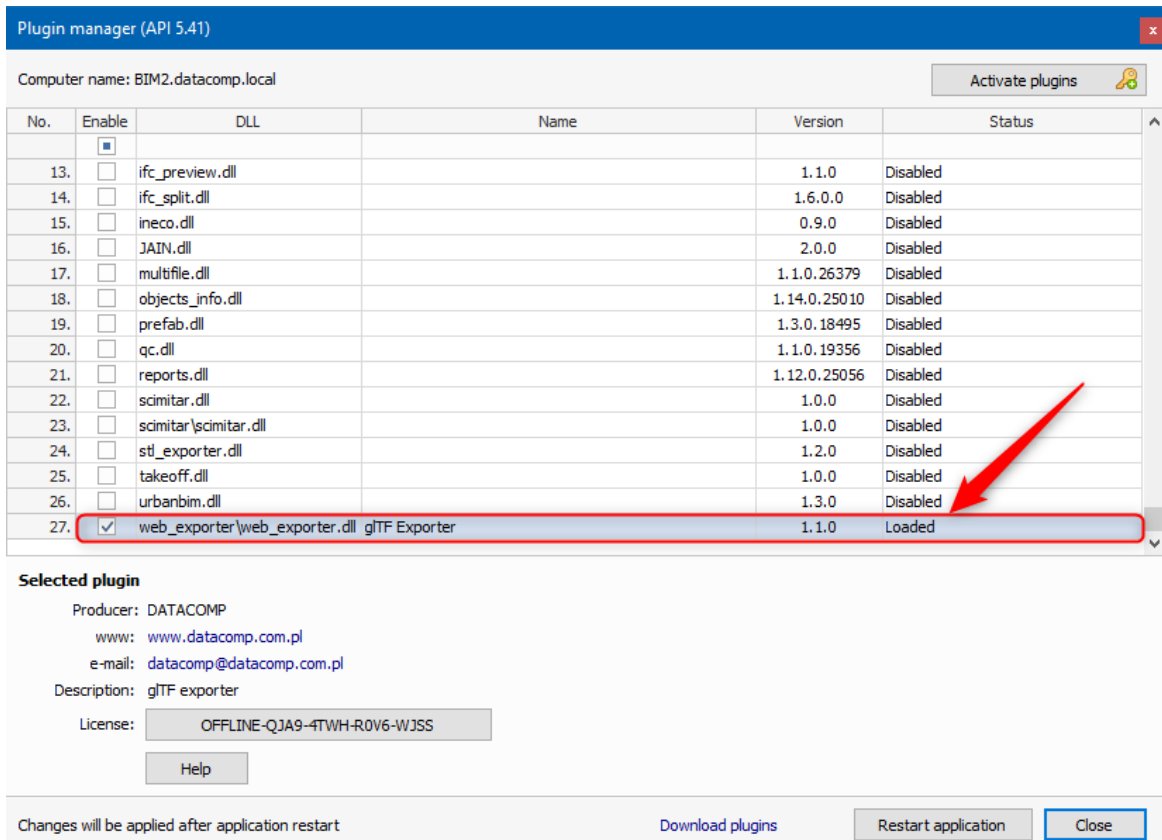
D. After entering the credentials, the license number will be inserted automatically. Press *Apply* to activate the plugin



E. Restart BIMvision



F. Check in the **Plugin manager** window if the plugin has been activated. Its status should be *Loaded*.



Plugin manager (API 5.41)

Computer name: BIM2.datacomp.local Activate plugins

No.	Enable	DLL	Name	Version	Status
13.	<input type="checkbox"/>	ifc_preview.dll		1.1.0	Disabled
14.	<input type="checkbox"/>	ifc_split.dll		1.6.0.0	Disabled
15.	<input type="checkbox"/>	ineco.dll		0.9.0	Disabled
16.	<input type="checkbox"/>	JAIN.dll		2.0.0	Disabled
17.	<input type="checkbox"/>	multifile.dll		1.1.0.26379	Disabled
18.	<input type="checkbox"/>	objects_info.dll		1.14.0.25010	Disabled
19.	<input type="checkbox"/>	prefab.dll		1.3.0.18495	Disabled
20.	<input type="checkbox"/>	qc.dll		1.1.0.19356	Disabled
21.	<input type="checkbox"/>	reports.dll		1.12.0.25056	Disabled
22.	<input type="checkbox"/>	scimitar.dll		1.0.0	Disabled
23.	<input type="checkbox"/>	scimitar\scimitar.dll		1.0.0	Disabled
24.	<input type="checkbox"/>	stl_exporter.dll		1.2.0	Disabled
25.	<input type="checkbox"/>	takeoff.dll		1.0.0	Disabled
26.	<input type="checkbox"/>	urbanbim.dll		1.3.0	Disabled
27.	<input checked="" type="checkbox"/>	web_exporter\web_exporter.dll	gITF Exporter	1.1.0	Loaded

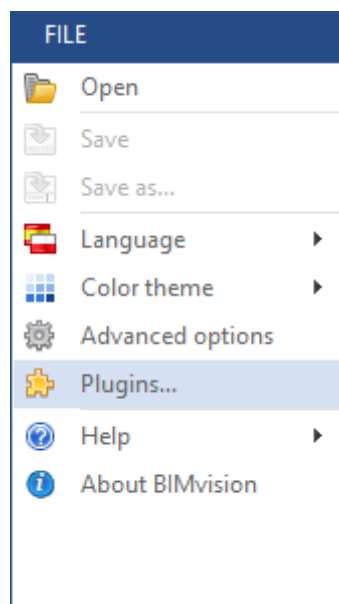
**Selected plugin**

Producer: DATACOMP  
www: [www.datacomp.com.pl](http://www.datacomp.com.pl)  
e-mail: [datacomp@datacomp.com.pl](mailto:datacomp@datacomp.com.pl)  
Description: gITF exporter  
License: OFFLINE-QJA9-4TWH-R0V6-WJSS  
Help

Changes will be applied after application restart Download plugins Restart application Close

## 2/ Activation of several plugins at once

A. In the BIMvision menu go to FILE => PLUGINS



FILE

- Open
- Save
- Save as...
- Language
- Color theme
- Advanced options
- Plugins...**
- Help
- About BIMvision

B. The **Plugin manager** window will appear. Check the plugins you want to activate and press *Activate plugins* button

No.	Enable	DLL	Name	Version	Status
1.	<input type="checkbox"/>	4d\4d.dll		1.0.0	Disabled
2.	<input type="checkbox"/>	bimhealthy.dll		1.1.0	Disabled
3.	<input type="checkbox"/>	BIMQuantityTakeoff\BIMQuantityTakeoff.dll		1.5.0	Disabled
4.	<input type="checkbox"/>	bimserver.center.dll		0.4.0	Disabled
5.	<input type="checkbox"/>	cobie.dll		1.2.0.25237	Disabled
6.	<input type="checkbox"/>	collisions.dll		1.3.0.25138	Disabled
7.	<input type="checkbox"/>	compare.dll		1.0.0	Disabled
8.	<input type="checkbox"/>	doc.dll		1.0.0	Disabled
9.	<input checked="" type="checkbox"/>	gallery.dll	Gallery	2.7.0	Demo mode / Not activated
10.	<input type="checkbox"/>	ifc_comments.dll		3.2.0	Disabled
11.	<input type="checkbox"/>	ifc_edit.dll		1.0.0.26368	Disabled
12.	<input checked="" type="checkbox"/>	ifc_merge.dll	IFC Merge	1.6.0.0	Demo mode / Not activated
13.	<input type="checkbox"/>	ifc_preview.dll		1.1.0	Disabled
14.	<input type="checkbox"/>	ifc_split.dll		1.6.0.0	Disabled
15.	<input type="checkbox"/>	ineco.dll		0.9.0	Disabled

**Selected plugin**

Producer:  
www:  
e-mail:  
Description:  
License: Plugin is disabled

Changes will be applied after application restart

Download plugins Restart application Close

**NOTE!** If the plugin is not listed in the Plugin Manager window, please download its DEMO version from [store.bimvision.eu](http://store.bimvision.eu).

C. A dialog window will show up. Enter your credentials

Plugin manager (API 5.41)

Computer name: BIM2.datacomp.local

Activate plugins

No.	Enable	DLL	Name	Version	Status
1.	<input type="checkbox"/>	4d\4d.dll		1.0.0	Disabled
2.	<input type="checkbox"/>	bimhealthy.dll		1.1.0	Disabled
3.	<input type="checkbox"/>	BIMQuantityTakeoff\BIMQuantityTakeoff.dll		1.5.0	Disabled
4.	<input type="checkbox"/>	bimserver.center.dll		0.4.0	Disabled
5.	<input type="checkbox"/>	cobie.dll		1.2.0.25237	Disabled
6.	<input type="checkbox"/>	collisions.dll		1.3.0.25138	Disabled
7.	<input type="checkbox"/>	compare.dll		1.0.0	Disabled
8.	<input type="checkbox"/>	doc.dll		1.0.0	Disabled
9.	<input checked="" type="checkbox"/>	gallery.dll	Gallery	2.7.0	Demo mode / Not activated
10.	<input type="checkbox"/>	ifc_comments.dll		3.2.0	Disabled
11.	<input type="checkbox"/>	ifc_edit.dll		1.0.0.26368	Disabled
12.	<input checked="" type="checkbox"/>	ifc_merge.dll	IFC Merge	1.6.0.0	Demo mode / Not activated
13.	<input type="checkbox"/>	ifc_preview.dll		1.1.0	Disabled
14.	<input type="checkbox"/>	ifc_split.dll		1.6.0.0	Disabled
15.	<input type="checkbox"/>	ineco.dll		0.9.0	Disabled

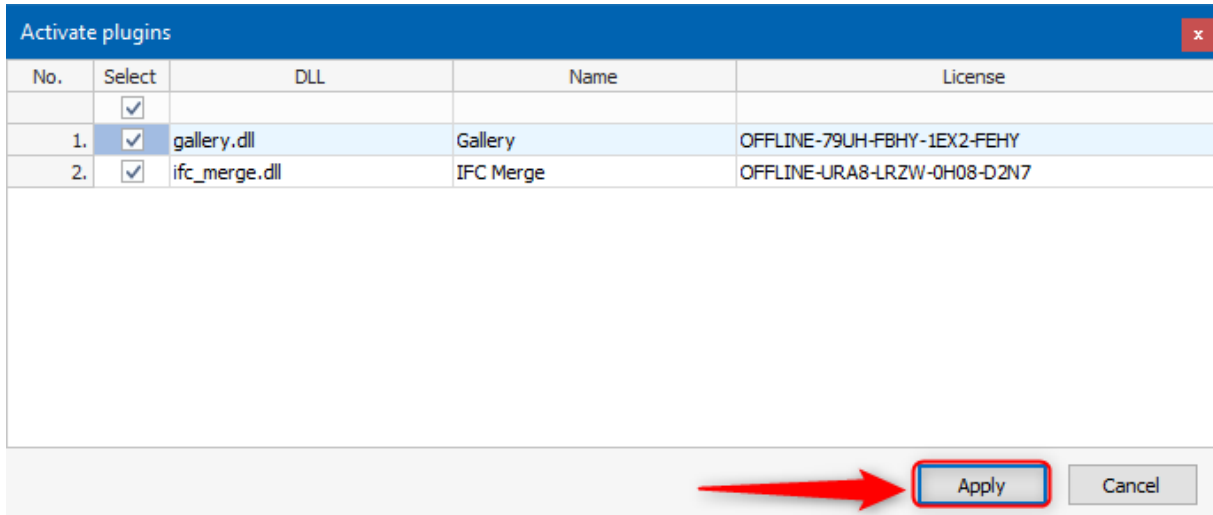
**Selected plugin**

Producer:  
www:  
e-mail:  
Description:  
License: Plugin is disabled

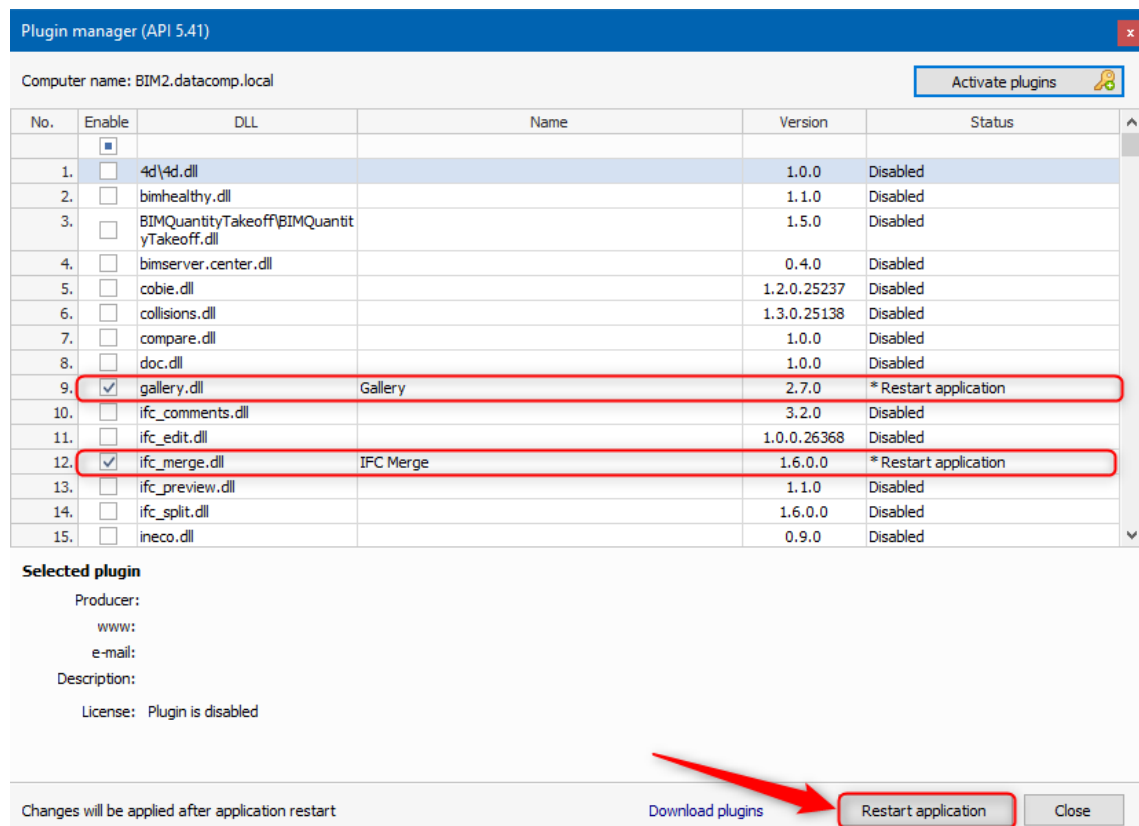
Changes will be applied after application restart

Download plugins Restart application Close

D. Then a window with activated plugins and license numbers will appear. Press *Apply* to activate the plugins



E. Finally, a restart of the application is required



F. Please check the plugin statuses in the BIMvision **Plugin manager**. Properly activated full versions of plugins should have the *Loaded* status.

No.	Enable	DLL	Name	Version	Status
1.	<input type="checkbox"/>	4d\4d.dll		1.0.0	Disabled
2.	<input type="checkbox"/>	bimhealthy.dll		1.1.0	Disabled
3.	<input type="checkbox"/>	BIMQuantityTakeoff\BIMQuantityTakeoff.dll		1.5.0	Disabled
4.	<input type="checkbox"/>	bimserver.center.dll		0.4.0	Disabled
5.	<input type="checkbox"/>	cobie.dll		1.2.0.25237	Disabled
6.	<input type="checkbox"/>	collisions.dll		1.3.0.25138	Disabled
7.	<input type="checkbox"/>	compare.dll		1.0.0	Disabled
8.	<input type="checkbox"/>	doc.dll		1.0.0	Disabled
9.	<input checked="" type="checkbox"/>	gallery.dll	Gallery	2.7.0	Loaded
10.	<input type="checkbox"/>	ifc_comments.dll		3.2.0	Disabled
11.	<input type="checkbox"/>	ifc_edit.dll		1.0.0.26368	Disabled
12.	<input checked="" type="checkbox"/>	ifc_merge.dll	IFC Merge	1.6.0.0	Loaded
13.	<input type="checkbox"/>	ifc_preview.dll		1.1.0	Disabled
14.	<input type="checkbox"/>	ifc_split.dll		1.6.0.0	Disabled
15.	<input type="checkbox"/>	ineco.dll		0.9.0	Disabled

**Selected plugin**

Producer:  
www:  
e-mail:  
Description:  
License: Plugin is disabled

Changes will be applied after application restart      Download plugins      Restart application      Close

\* If you have any problem with plugin activation, make sure you have administrator rights.

**Enjoy using BIMvision!**



**BIMvision**<sup>®</sup>

**Contact us:**

[contact@bimvision.eu](mailto:contact@bimvision.eu)

[www.bimvision.eu](http://www.bimvision.eu)

+48 12 412 99 77

or

[www.helpcenter.bimvision.eu](http://www.helpcenter.bimvision.eu)