

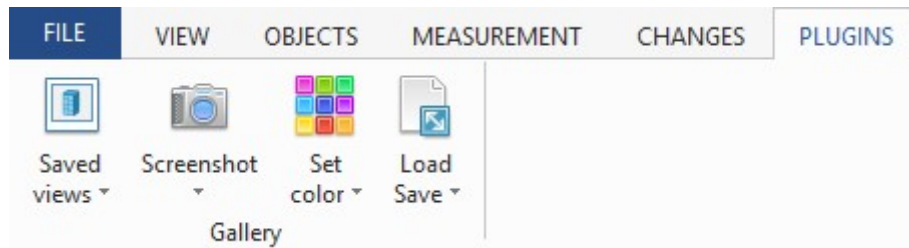
# Gallery

## Plugin for BIM Vision

Thank you for choosing Gallery plugin. This BIM Vision extension allows to save and load custom views, change the colors of IFC elements and easily take screenshots of current view. Gallery is automatically saved and loaded with IFC model to/from BIM Vision File (\*.BVF), or it can be manually loaded and saved to an external file - without an IFC model.

## User interface

Plugin adds group “Gallery” with three buttons in ribbon tab “PLUGINS”.

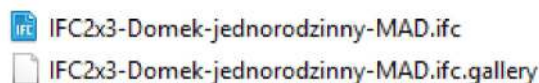


## Saved views

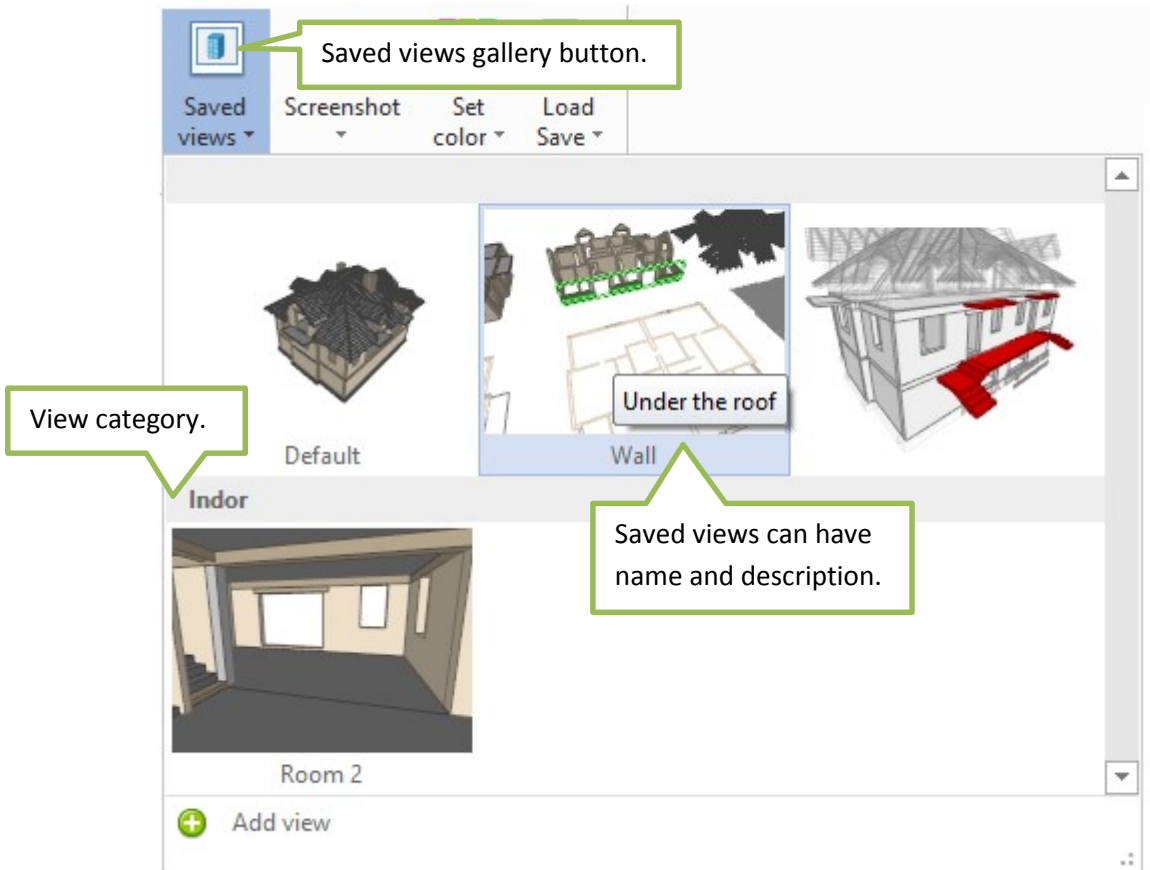
When you add a view, plugin remembers main BIM Vision viewing options (camera position, display settings) and state of all IFC elements (active, visible, transparent, selection, colors). Plugin also makes a thumbnail and put it into gallery of views. When you choose this view from gallery, all saved data will be restored.

## External gallery file

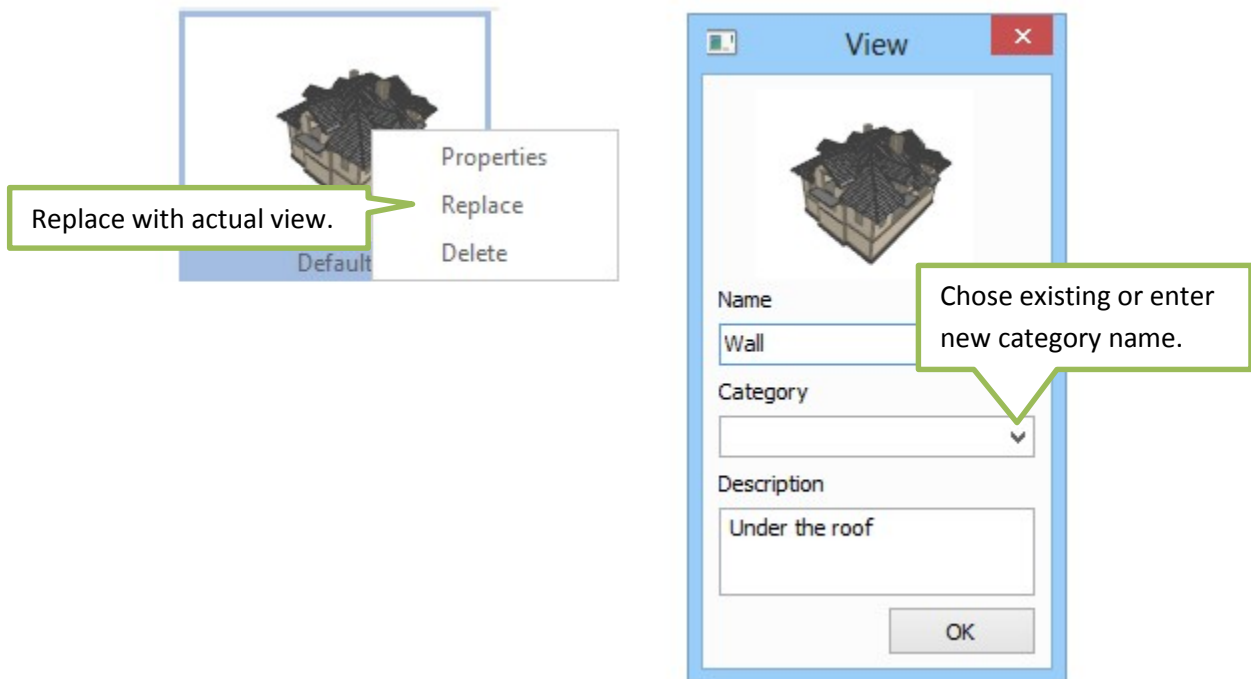
As in plugin version 1.x, when you open an IFC file, views will be automatically loaded from separate file with “.gallery” extension – if that file exist. The name of the file should be same as the name of IFC model file and the file must be in the same directory.



Changes will be not saved automatically to this file – BIM Vision asks you only to save data to BVF file (with IFC model). You can save and load to/from external file by clicking “Load Save” button.

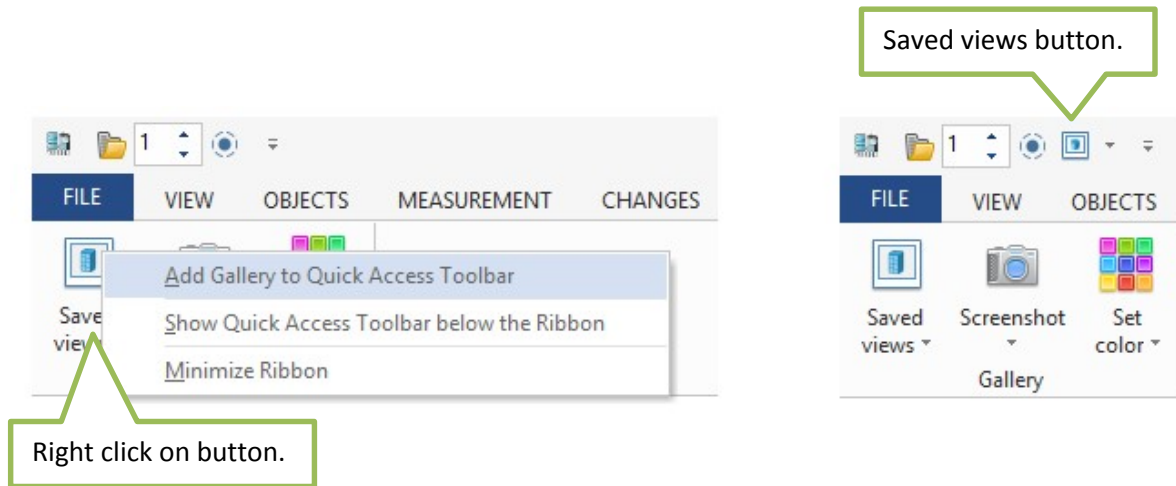


Right click on saved view to show menu with additional options:



When category becomes empty (has no views) it will be automatically deleted.

For more convenient usage you can add “Saved views” gallery button to Ribbon’s Quick Access Toolbar.



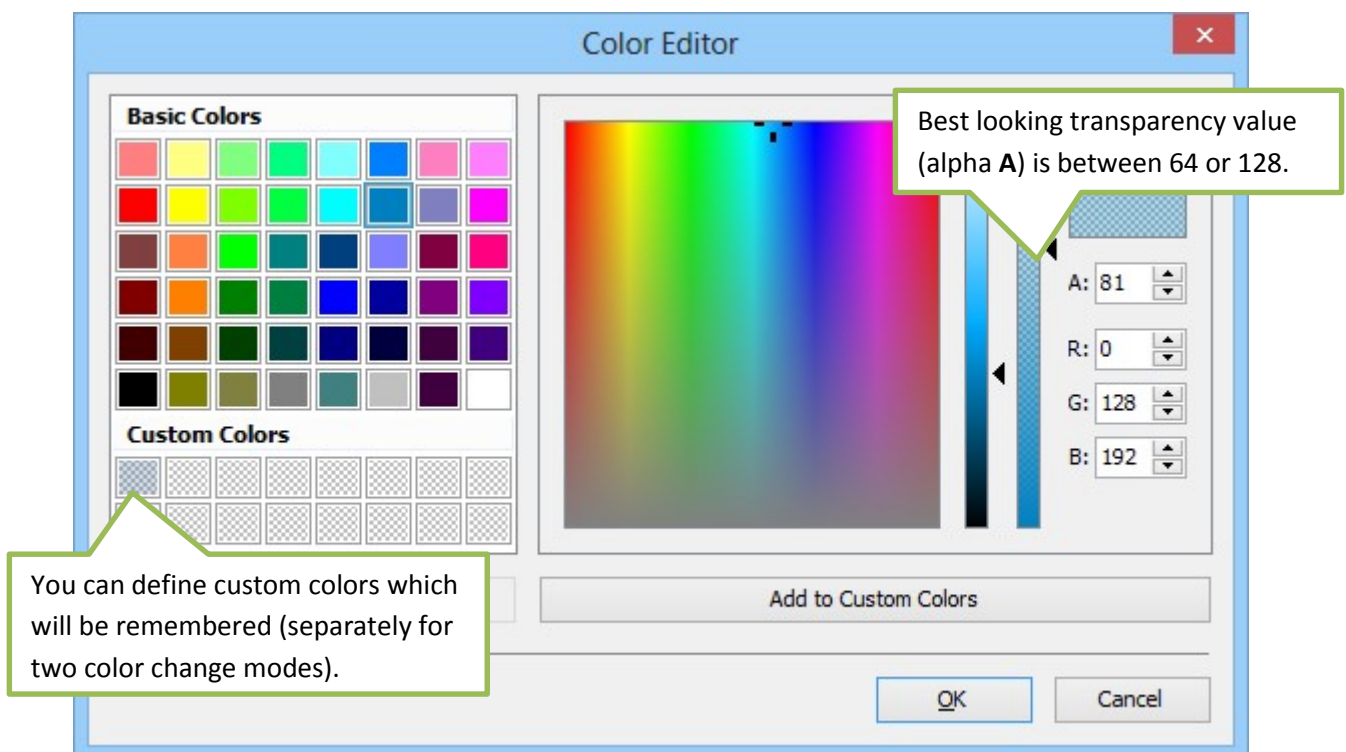
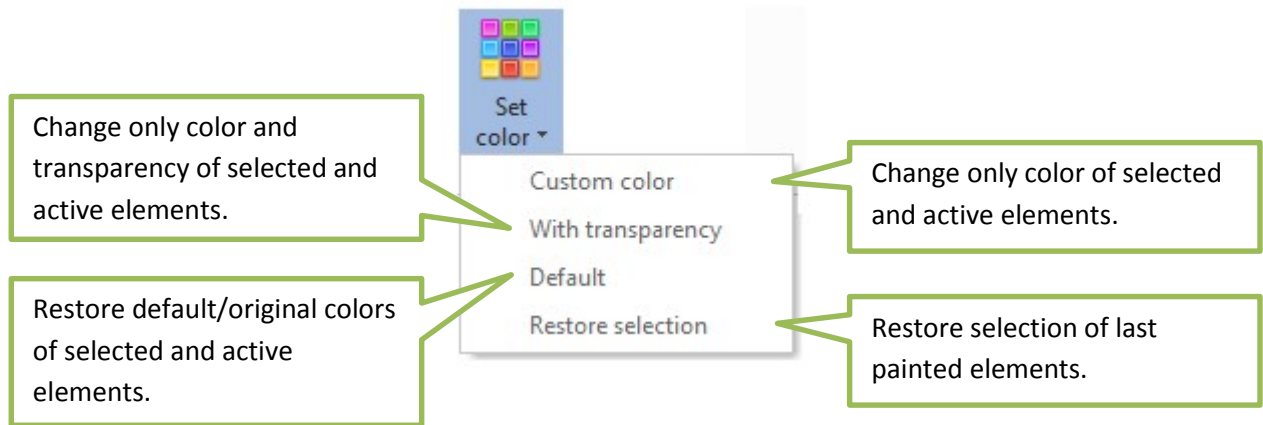
## Take screenshots

You can either take screenshots of current view and save it to PNG/BMP image file or directly copy to Clipboard.



## Change colors

Change is made only for time of viewing the model (unless you save it in view). You can also modify (remove or add) objects transparency.



## Release notes

- 2.0
  - gallery is automatically saved and loaded with IFC model to/from BIM Vision File (\*.BVF)
  - ability to manually save and load gallery to/from an external file (\*.gallery)
  - added thumbnail to properties window
  - option to clear gallery
  - demo does not allow to save gallery

## Demo limitations

In demo mode you cannot save gallery. You can also do up to 4 screenshots per application run. There is also limit for number of view refresh caused by plugin to about 100.

## Contact and copyrights

If you have any suggestions or questions please write to: [contact@bimvision.eu](mailto:contact@bimvision.eu) with “plugin Gallery” in title. More plugins: [store.bimvision.eu](http://store.bimvision.eu)

© Datacomp Sp. z o.o. [www.datacomp.com.pl](http://www.datacomp.com.pl)

Plugin uses FatCow icons (<http://www.fatcow.com/free-icons>)